

# AXIS 240Q Video Server

## *Digital benefits for analog surveillance systems*

The AXIS 240Q Video Server transforms traditional analog video into high quality digital images. It connects directly to an Ethernet network, and is a cost-efficient alternative that provides high quality video from analog video sources at 6/5 frames per second per channel.

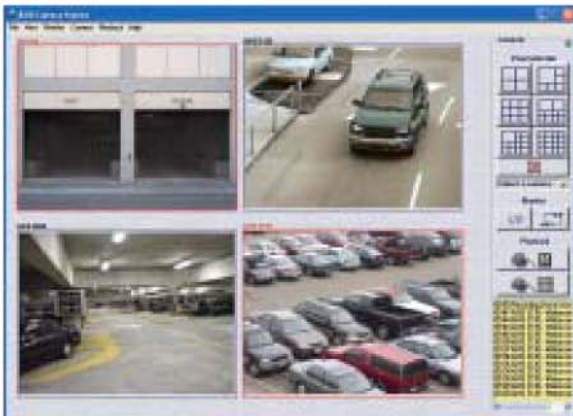
The high-performance AXIS 240Q is designed for professional IP-Surveillance systems, providing video from all cameras simultaneously. It is ideal as an integrated part of a large security system. Network utilization is optimized with functions such as built-in video motion detection and multiple compression levels. Powerful event management based on triggered or scheduled events adds value for the demanding customer.

The AXIS 240Q comes with a strong security package, including HTTPS, IP address filtering and multiple user access levels with password protection. Based on the feature set of the world's most sold video server, the AXIS 240Q also has PTZ functionality, a powerful application programming interface, and is compatible with all major software applications.

Axis video servers represent a cost-effective single box solution for transmitting digital video over intranet networks, or the Internet.



- High quality video at 6/5 frames per second per channel
- Built-in Video Motion Detection
- Compatible with all major software applications
- Support for analog PTZ Dome cameras
- HTTPS encryption for network security



# AXIS 240Q Video Server



Specifications	
<b>Models</b>	Axis 240Q: Four port Video Server Also available as for Video Rack Solution
<b>Video compression</b>	Motion JPEG
<b>Resolutions</b>	4CIF, 2CIFExp, 2CIF, CIF, QCIF max 704x480 (NTSC) 704x576 (PAL) min 160x120 (NTSC) 176x144 (PAL)
<b>Frame rate (NTSC/PAL)</b>	Up to 6/5 fps per channel
<b>Video streaming</b>	Motion JPEG Controllable frame rate and bandwidth
<b>Image settings</b>	Compression levels: 11 (Motion JPEG) /23 (MPEG-4) Rotation: 90°, 180°, 270° Aspect ratio correction Color: color, black & white Overlay capabilities: time, date, text, image or privacy mask De-interlace filter
<b>Security</b>	Multiple user access levels with password protection, IP address filtering, HTTPS encryption, IEEE 802.1X authentication.
<b>Alarm and event management</b>	Events triggered by video motion detection, external inputs, audio or according to a schedule Image upload over FTP, email and HTTP Notification over TCP, email, HTTP and external outputs Pre- and post alarm buffer of 3 MB per channel
<b>Pan/Tilt/Zoom</b>	A wide range of analog PTZ dome cameras is supported, free drivers available at <a href="http://www.axis.com">www.axis.com</a> 20 presets/camera, Guard tour, PTZ control queue Supports Windows compatible joysticks
<b>Connectors</b>	4 BNC analog composite video (NTSC/PAL autosensing) Ethernet 10BaseT/100BaseTX, RJ-45 Terminal block: 4 alarm inputs, 4 alarm outputs, RS-485/422 half duplex port, alternative power connection D-Sub for RS-232 port
<b>Casing</b>	Metal casing. Standalone, stackable or with brackets for wall or cage mount
<b>Power</b>	7 - 20 V DC, max 8 W
<b>Operating conditions</b>	5 - 50 °C (41 - 122 °F) Humidity 20 - 80% RH (non condensing)
<b>Installation, management and maintenance</b>	AXIS Camera Management tool on CD and web-based configuration Configuration of backup and restore Firmware upgrades over HTTP or FTP, firmware available at <a href="http://www.axis.com">www.axis.com</a>
<b>Processors and memory</b>	CPU: ETRAX 100LX 32bit Video processing and compression: ARTPEC-2 Memory: 32 MB RAM, 8 MB Flash
<b>Video access from Web browser</b>	Camera live view, sequence tour for up to 20 PTZ presets or external Axis video sources, customizable HTML pages
<b>Minimum Web browsing requirements</b>	Pentium III CPU 500 MHz or higher, or equivalent AMD, 128 MB RAM, AGP graphics card 32 MB RAM, Direct Draw Windows XP, 2000, DirectX 9.0 or later Internet Explorer 6.x or later  For other operating systems and browsers see <a href="http://www.axis.com/techsup">www.axis.com/techsup</a>
<b>System integration support</b>	Open API for application integration, including AXIS VAPIX API*, AXIS Media Control SDK*, event trigger data in video stream Quality of Service (QoS) Layer 3, DiffServ Model Watchdog ensures continuous operation, event notifications can be monitored by other systems Embedded Linux operating system <i>* Available at <a href="http://www.axis.com">www.axis.com</a></i>
<b>Supported protocols</b>	IPv4/v6, HTTP, HTTPS, SSL/TLS*, TCP, QoS, SNMPv1/v2c/ v3 (MIB-II), RTSP, RTP, UDP, IGMP, RTCP, SMTP, FTP, ICMP, DHCP, UPnP, Bonjour, ARP, DNS, DynDNS, SOCKS, IEEE802.1X. More information on protocol usage available at <a href="http://www.axis.com">www.axis.com</a> <i>*This product includes software developed by the Open SSL Project for use in the Open SSL Tool kit (<a href="http://www.openssl.org">www.openssl.org</a>)</i>
<b>Video management software (not included)</b>	AXIS Camera Station - Surveillance application for viewing, recording and archiving up to 25 cameras See <a href="http://www.axis.com/partner/adp_partners.htm">www.axis.com/partner/adp_partners.htm</a> for further software applications via partners
<b>Included accessories</b>	Power supply 9V DC, mounting brackets, connector kit, Installation Guide, CD with installation tool, software and User's Manual
<b>Accessories (not included)</b>	AXIS 295 Video Surveillance Joystick MPEG-4 Decoder multi-user license pack Cable adapter Y/C to BNC (AXIS 2415/SA)
<b>Approvals</b>	EN 55022 Class B, EN 61000-3-2, EN 61000-3-3, EN 55024, FCC Part 15 Subpart B Class B, ICES-003 Class B, VCCI Class B, C-tick AS/NZS CISPR 22, EN 60950 Power supply: EN 60950, UL, cUL
<b>Dimensions (HxWxD) and weight</b>	42 x 140 x 155 mm (1.7" x 5.5" x 6.1") 540 g (1.2 pounds) excluding power supply



AXIS 240Q Video Server is also available as blade version for AXIS Rack Solution. 12 blade slots allow for centralized video server management.